



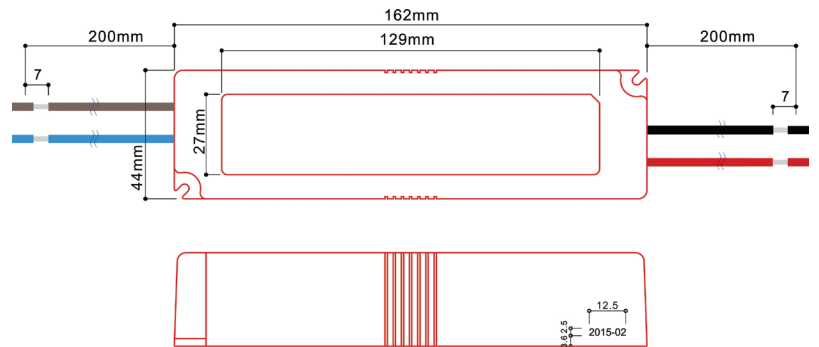
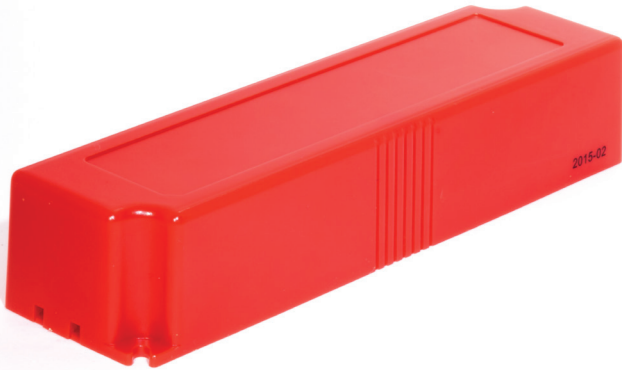
# PS-CV-120-12-5000ma-60W-IP67

POWER SUPPLY

## SPECIFICATION SHEET

PROJECT NAME / No: \_\_\_\_\_

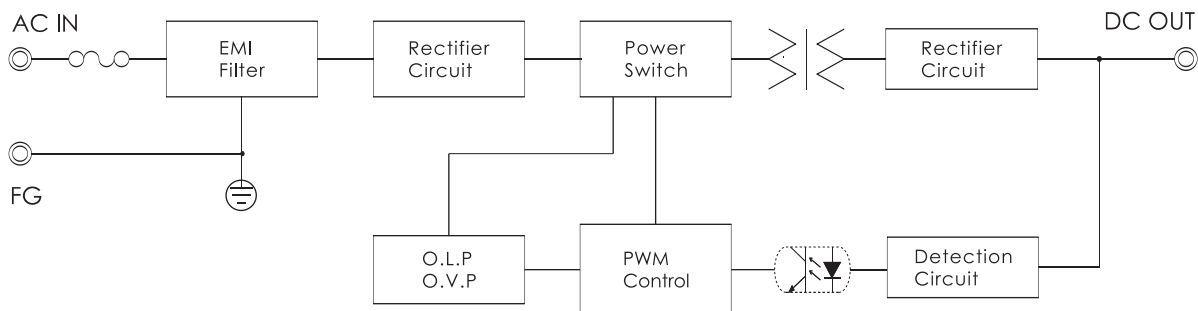
TYPE: \_\_\_\_\_ QTY: \_\_\_\_\_



### DESCRIPTION ::

- Constant voltage design (C.V. mode)
- AC input voltage 100-120V
- Protections: Overload, Over voltage, Short Circuit
- IP67 design for outdoor installations
- 100% full load burn-in test
- Suitable for LED lighting and moving sign applications
- Plastic case
- Class 2 power unit
- Safety standards : UL879
- EMC standards : FCC Part 15 class B
- 3 years warranty

### ORDER INFORMATION ::



7900 Boul. Henri-Bourassa Ouest  
St-Laurent, Québec, Canada, H4S 1V4  
1 800 361-6000  
www.richelieu.com

**PS-CV-120-12-5000ma-60W-IP67**  
POWER SUPPLY

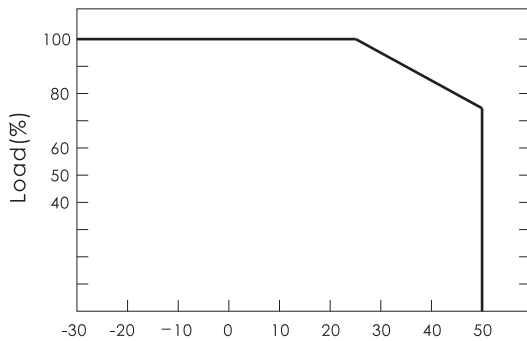
## FEATURES ::

IP67     SELV LPS   Pending

	ITEM	PS-CV-120-12-5000ma-60W-IP67
INPUT	VOLTAGE RANGE	AC100~120V
	FREQUENCY RANGE	47~63Hz
	EFFICIENCY(typ.)	80%
	AC CURRENT(typ.)	1A/100VAC
	INRUSH CURRENT(typ.)	COLD START 30A/100VAC
	LEAKAGE CURRENT	—
OUTPUT	DC VOLTAGE	12V
	RATED CURRENT	5A(3.75A@50°C)
	RATED POWER	60W
	RIPPLE&NOISE(max.) Note2	170mVp-p
	VOLTAGE ADJ. RANGE	±5%
	VOLTAGE TOLERANCE Note3	±3%
	LINE REGULATION Note4	±1%
	LOAD REGULATION Note5	±2%
	SETUP,RISE TIME(typ.)	800ms,80ms/100VAC at full load
HOLD UP TIME(typ.)	12ms/100VAC at full load	
PROTECTION	SHORT CIRCUIT	Hiccup mode ; recovers automatically after fault condition is removed
	OVERLOAD	Over 110% of rating ; recovers automatically after fault condition is removed
	OVER VOLTAGE	115~140% of rating
ISOLATION	WITHSTAND VOLTAGE	I/P-O/P:AC3KV, I/P-F.G:AC1.5KV, O/P-F.G:AC0.5KV
	ISOLATION RESISTANCE	I/P-O/P, I/P-F.G, O/P-F.G:DC500V 100Mohms(At room temp. & humid.)
ENVIRONMENT	WORKING TEMP.&HUMID.	-30~+50°C(Refer to "DERATING CURVE"),20~95%RH
	STORAGE TEMP.&HUMID.	-40~+75°C,10~95%RH
	VIBRATION	10~500Hz, 2G 10min./1cycle, period for 60min. each along X, Y, Z axes
OTHERS	DIMENSION	170.5*42.5*38mm(L*W*H)
	PACKING	0.35Kg

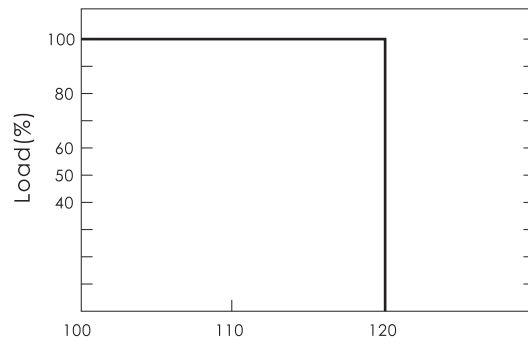
- NOTE**
1. All parameters not specially mentioned are at 220Vac input, rare load and 25°C of ambient temperature.
  2. Ripple & noise are measured at 20MHZ of bandwidth by using a 12" twisted pare-wise terminated with 0.1 uF & 47 uF parallel capacitor.
  3. Tolerance : includes set up tolerance, line regulation and load regulation.
  4. Line regulation is measured from low line to high line at rated load.
  5. Laod regulation is measured from low 0% to 100% rated load.

## DERATING CURVE ::



Ambient Temperature(°C)

## STATIC CHARACTERISTICS ::



Input Voltage(Vac), 60Hz



7900 Boul. Henri-Bourassa Ouest  
St-Laurent, Québec, Canada, H4S 1V4  
1 800 361-6000  
www.richelieu.com

**PS-CV-120-12-5000ma-60W-IP67**  
POWER SUPPLY